

SPARE PARTS SECTION

The following section covers the spare parts diagrams and lists that were current at the time this manual was originally printed. Due to continuous improvements of the machine, changes may be made at any time without notification.

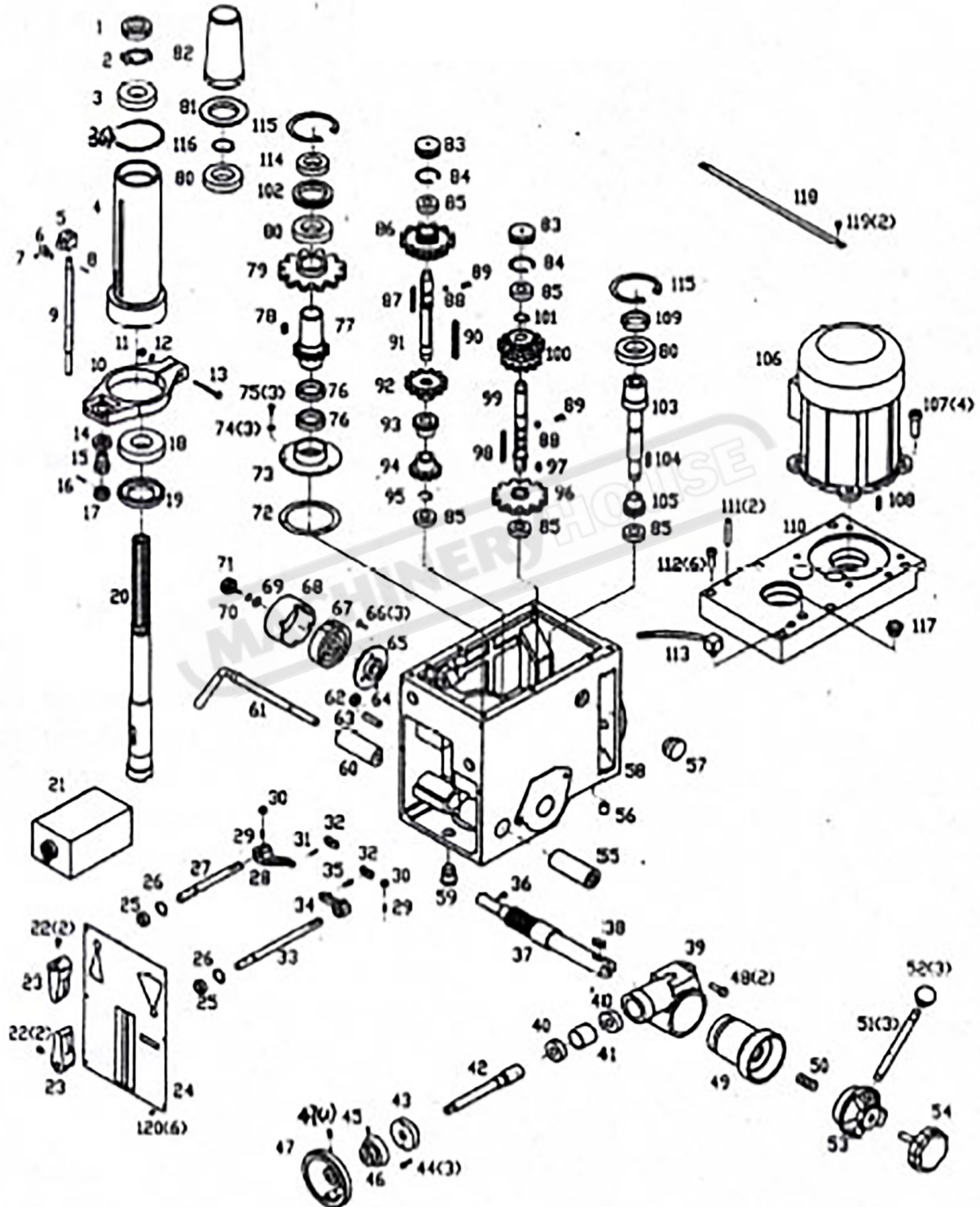
HOW TO ORDER SPARE PARTS

1. Have your machines **model number, serial number & date of manufacture** on hand, these can be found on the specification plate mounted on the machine
2. A scanned copy of your parts list/diagram with required spare part/s identified
3. Go to www.machineryhouse.com.au/contactus and fill out the enquiry form attaching a copy of scanned parts list.

CONTENTS

B. Head Body Parts.....	25
C. Base Parts.....	27
C. Column And Supports Parts.....	28

B. HEAD BODY PARTS



OPERATION MANUAL

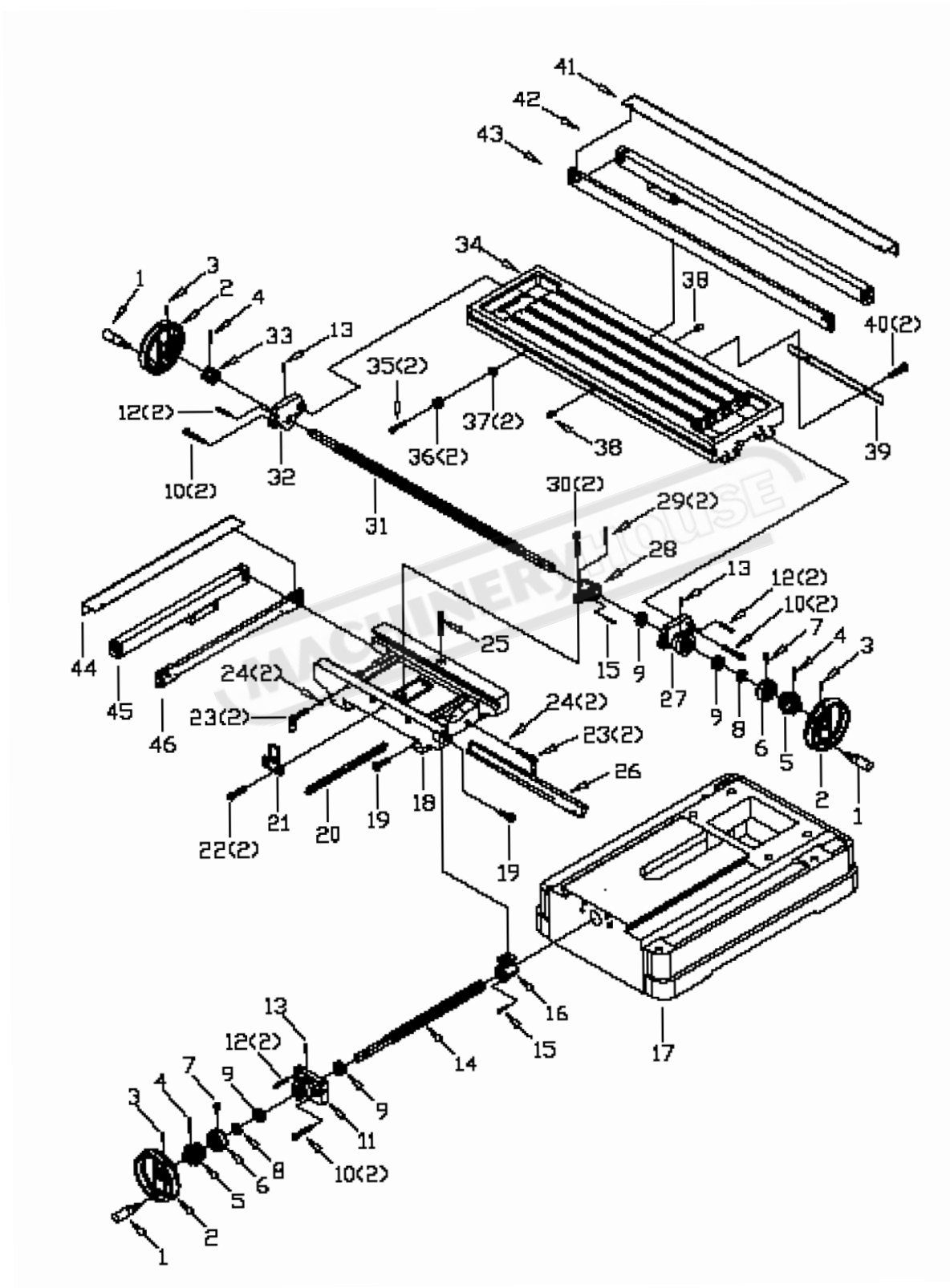
B. HEAD BODY PARTS LIST

1 lock nut	41 separating ring	81 arbor bolt cover base
2 lock washer	42 worm shaft	82 arbor bolt cover
3 ball bearing	43 worm cover	83 cap
3 (1) washer	44 screw	84 retaining ring
4 sleeve	45 screw	85 ball bearing
5 fixed bolt	46 graduation plate	86 gear
6 scale-board	47 handle wheel	87 key
7 screw	47(1) screw	88 steel ball
8 pin	48 screw	89 spring
9 graduated rod	49 worm gear	90 key
10 feed base	50 spring	91 shaft
11 nut	51 handle rod	92 gear
12 washer	52 handle ball	93 gear
13 screw	53 handle body	94 gear
14 nut	54 big ripple handle	95 retaining ring
15 support	55 fixed tight collar	96 gear
16 pin	56 oil cover	97 key
17 knob	57 oil pointer	98 key
18 ball bearing	58 head body	99 shaft II
19 bearing cup	59 fixed nut	100 gear
20 spindle	60 fixed tight collar	101 retaining ring
21 electric box	61 handle rod	102 separating ring
22 screw	62 nut	103 motor
23 speed lever	63 screw	104 key
24 name plate	64 pin	105 gear
25 oil seal	65 spring base	106 motor
26 retaining ring	66 washer 1	07 screw
27 lever shaft(left)	67 spring plate	108 key
28 lever(left)	68 spring cap	109 oil seal
29 screw	69 washer	110 head body cover
30 nut	70 washer	111 pin
31 pin	71 small ripple handle	112 screw
32 lever bracket	72 airtight ring	113 pipe radiator
33 lever shaft(right)	73 airtight base	114 oil seal
34 lever(right)	74 washer	115 retaining ring
35 pin	75 screw	116 retaining ring
36 screw	76 oil seal	117 oil cap
37 pinion shaft	77 gear	118 degree-meter
38 key	78 key	119 screw
39 feed cover	79 gear	120 screw
40 ball bearing	80 ball bearing	

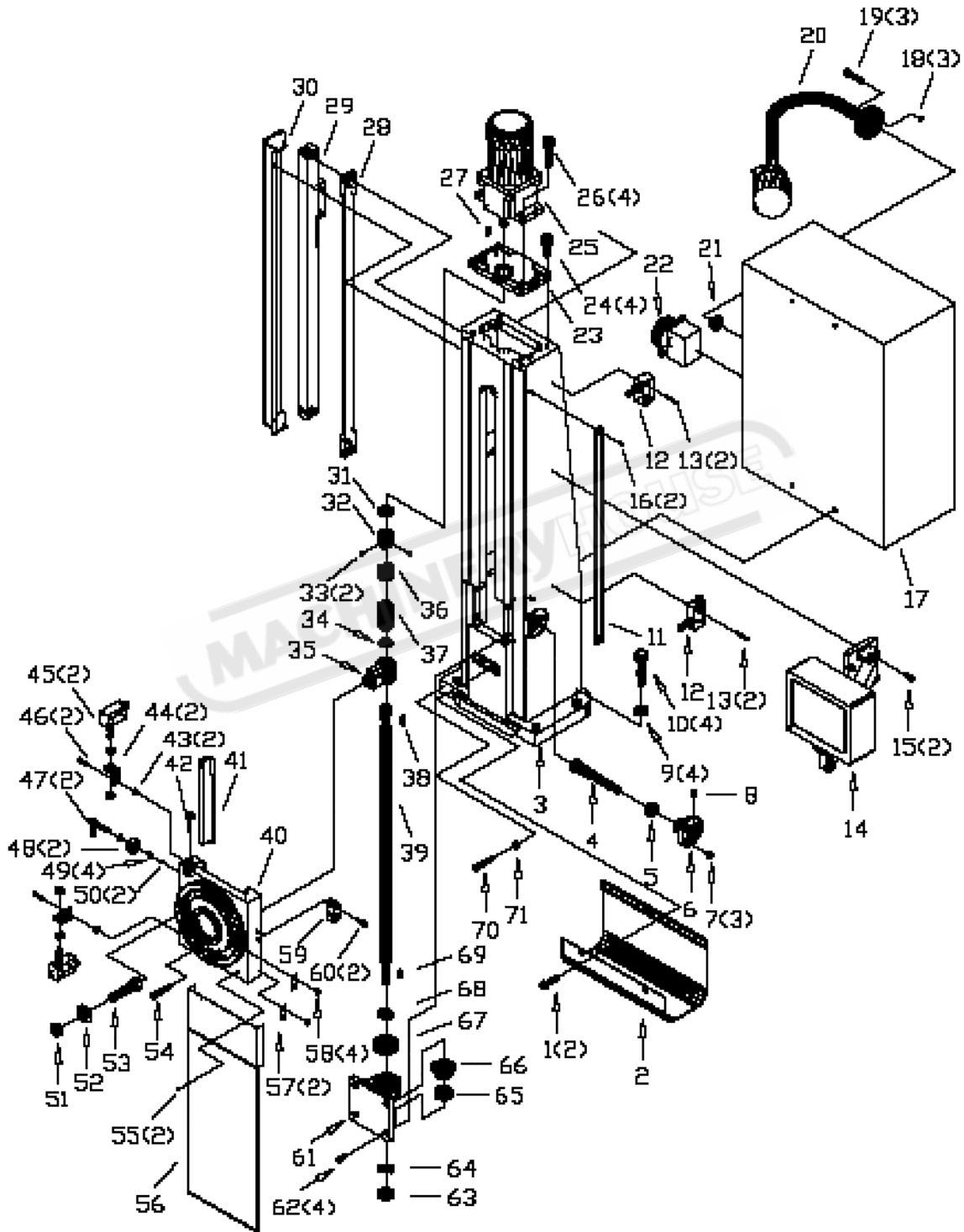


OPERATION MANUAL

C. BASE PARTS



C. COLUMN AND SUPPORTS PARTS



OPERATION MANUAL

C. BASE PARTS LIST

1 handle	17 base	33 dial clutch
2 wheel	18 table	34 table
3 screw	19 gib strip screw	35 screw
4 pin	20 short gib strip	36 limited board
5 scale base	21 limited board	37 ladder shaped nut
6 graduation plate	22 bolt	38 oil cup
7 screw	23 lock screw	39 protect board slice
8 adjust washer	24 steel ball	40 screw
9 ball bearing	25 screw	41 X shield
10 screw	26 long gib strip	42 X the grating ruler
11 short guide screw support	27 bolt	43 X plate
12 pin	28 long guide screw nut	44 Y shield
13 oil cup	29 oil cup	45 Y the grating ruler
14 short guide screw nut	30 screw	46 Y plate
15 screw	31 long guide screw nut	
16 short guide screw nut	32 left guide screw support	

COLUMN AND SUPPORT PARTS

1 screw	25 column lifting motor	49 nut
2 protect board	26 screw	50 steel ball
3 column	27 key	51 nut
4 gear shaft	28 Z plate	52 washer
5 ball bearing	29 Z the grating ruler	53 bolt
6 head raise bracket	30 Z shield	54 screw
7 screw	31 ball bearing	55 screw
8 oil cup	32 secure clutch	56 artidust plate
9 washer	33 screw	57 indicator
10 bolt	34 the pressure spring seat	58 rivet
11 scale	35 column nut	59 the press block
12 limit switch	36 sliding clutch	60 screw
13 screw	37 A pressure spring	61 head raise bracket
14 digital display box	38 key	62 screw
15 screw	39 guide screw	63 round nut
16 rivet	40 Raise and lower	64 tab washer for found nut
17 Electric box	41 gib strip	65 ball bearing
18 nut	42 screw	66 gear
19 screw	43 nut	67 ball bearing
20 working lamp	44 switch frame	68 retaining ring
21 retainer	45 limit switch	69 key
22 the power switch	46 screw	70 screw
23 lifting motor seat	47 lock handle	71 nut
24 screw 48 the press block		